

SUBMERSIBLE FLOAT VALVE



- Accurate & Repeatable Level Control
- On-Off (Submersible Type)
- Fully Adjustable High & Low Level Settings
- Simple Design, Proven Reliable
- Easy Installation and Maintenance

The Cla-Val NGE, GE & AE Series Float Valve is a non-modulating valve which accurately controls the liquid level in tanks. This valve is designed to open fully when the liquid level reaches a preset low point and close tight when the level reaches a preset high point.

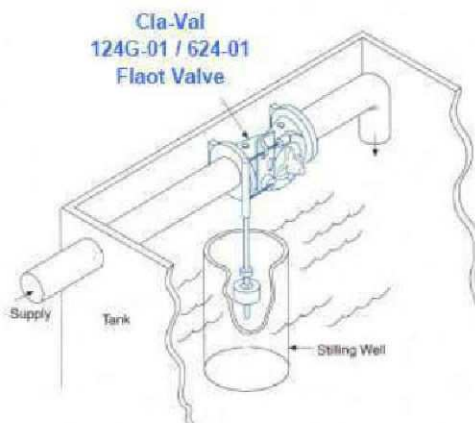
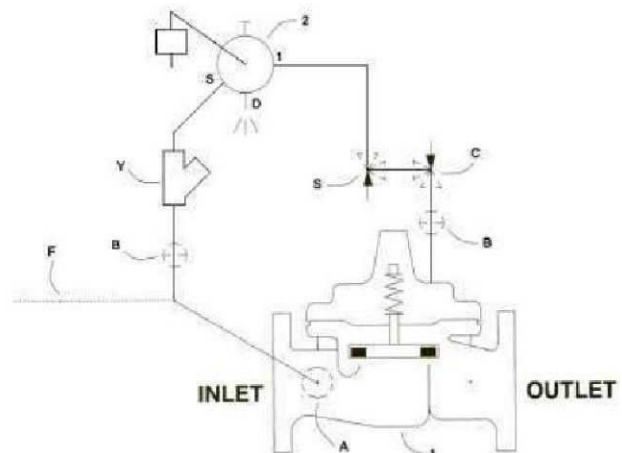
This is a hydraulically operated, diaphragm valve with the pilot control and float mechanism mounted on the cover of the main valve. The float positions and pilot control to close the valve when the float contacts the upper stop. The high and low liquid levels are adjusted by positioning the stop collars on the float rod. The difference between high and low levels can be adjusted to as little as one inch, or to as much as 18 inches by adding optional float rod extensions. Level settings can be as much as 11 1/2 feet below the valve. The float mechanism may be located remotely from the main valve. See the technical data sheet on Model CF1-C1 Float Control for additional information.

Schematic Diagram

Item	Description
1	Hytrol (NGE, GE or AE Main Valve)
2	CF1-C1 Float Control
Y	"Y" Strainer

Optional Features

Item	Description
A	X46A Flow Cleaner Strainer
C	CV Flow Control (Closing)
D	Check Valves With Cock
F	Independent Operating Pressure
S	CV Flow Control (Opening)
B	Spherical Valves



Typical Applications

The Model 124-01/624-01 Float Valve is commonly mounted above the high water level in a tank. Globe pattern valves are supplied standard with the float control mounted on the cover as illustrated, with a horizontal discharge. Angle valves are configured to discharge downwards. Note: We recommend protecting tubing and valve from freezing temperatures.

Installation

A stilling well (8" minimum diameter) must be provided around the float if the liquid surface is subject to turbulence, ripples or wind. When the valve is mounted on top of the tank roof a 2" clearance hole should be provided for side movement of the float rod where the rod goes through the top of the tank.

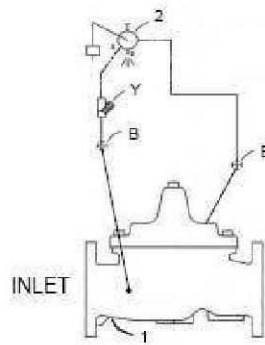
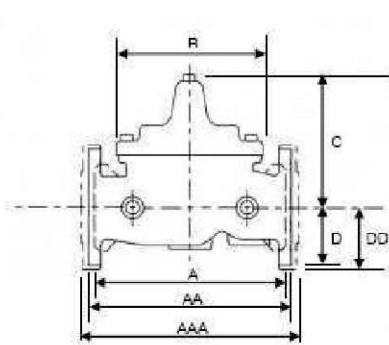
An independent source of air or water may be used to operate the valve. The pressure from this independent source must at all times be equal to or greater than pressure at the valve inlet.

If minimum flowing line pressure is less than 10 psi, consult Cla-Val for full details.

If the float control is remotely mounted from the main valve, control may be installed at any elevation above the valve, provided the flowing line pressure in psi is equal to or greater than the vertical distance in feet between the valve and the float control. See the technical data sheet on Model CF1-C1 for additional information.

SUBMERSIBLE FLOAT VALVE

Model: 624-01



Hytrol Valve

Dimensions

Size inch (mm)	1½" (32)	1½" (40)	2" (50)	3" (80)	4" (100)	5" (125)	6" (150)	8" (200)	10" (250)	12" (300)	14" (350)	16" (400)	20" (500)	24" (600)
A (Screwed)	184	184	238	318	-	-	-	-	-	-	-	-	-	-
AA (150 ANSI)	216	216	238	305	381	508	508	645	756	864	991	1051	1376	1562
AAA (300 ANSI)	229	229	295	337	397	533	533	670	790	902	1029	1105	1430	1635
B	143	143	168	232	292	400	400	508	600	711	832	902	1263	1350
C	140	140	165	208	270	340	340	406	435	530	614	635	1025	1116
D (150 ANSI)	64	64	76	95	114	140	140	172	203	241	267	299	394	489
DD (300 ANSI)	78	78	83	105	127	159	159	191	222	260	292	324	435	534

Pressure Ratings (Recommended Maximum Pressure - psi)

Valve Body & Cover		Pressure Class			
		Flanged *			Screwed
Grade	Material	ANSI Standard	150 lb	300 lb	End Details
ASTM A126	Cast Iron	B16.42	250	400	400
ASTM A216-WCB	Cast Steel	B16.5	285	400	400
ASTM B62	Bronze	B16.24	225	400	400
Type 304	Stainless Steel	B16.5	285	400	400
ASTM A-536	Ductile Iron	B16.42	250	400	400

Note: * ANSI flanged valves are available drilled to British Standard BSEN1092

Materials

Body & Cover	Cast Iron*	Cast Steel	Bronze	Stainless Steel	Ductile Iron*
Disc Retainer & Diaphragm	ASTM A126	ASTM A216-WCB	ASTM B62	Type 304 / 316	ASTM A-536
Washer	BS1452 Gr.220	BS1504-161	BS1400 LG2	BS1449 /2	BSEN1563
Trim: body, Disc Seat	Bronze is standard. 316 Stainless Steel is optional.			316 Stainless Steel	
Coating Internal & External	Epoxy with WRAS Approval				
Diaphragm	EPDM with WRAS Approval				
Stem	Stainless Steel				



E-724-01 (R-6/00)

CLA-VAL

PO Box 1325 Newport Beach CA 92659-0325
Phone: 949-722-4800 • Fax: 949-548-5441

CLA-VAL CANADA, LTD.
4687 Christie Drive
Beamsville, Ontario
Canada LOR 1B4
Phone: 905-563-4963
Fax: 905-563-4040

©COPYRIGHT CLA-VAL, 2000 Printed in USA.
Specifications subject to change without notice.

CLA-VAL SA
Chemin des Mesanges 1
CH-1032 Romanel/
Lausanne, Switzerland
Phone: 41-21-643-15-55
Fax: 41-21-643-15-50

www.cla-val.com

Represented By: