

EX.&CON. MEANS EXPANSION AND CONTRACTION.

REMARK:  
 \* ITEM 1 CASING F IS OUTER BALL.  
 \* F STANDS FOR FLANGE.

10	HEX BOLT/NUT	20	STAINLESS STEEL GRADE 316
9	RUBBER BOOTS	2	RUBBER
8	T-RUBBER BAND OR NC SPECIAL GASKET	5	RUBBER COMPLY WITH BS 6920
7	O-RING	2	
6	STOPPER	5	
5	SLEEVE PIPE	4	DUCTILE CAST IRON
4	MOVABLE PIPE B	1	BS EN 1563
3	MOVABLE PIPE A	1	GRADE 450/10
2	CASING	2	(FCD450)
1	CASING F	2	

ITEM NO.	PART NAME	QTY	MATERIAL
----------	-----------	-----	----------

DUCTILE CAST IRON SETTLEMENT  
 EXPANSION JOINT  
 SUPER FLEX  
 (BS EN 1092 PN16 FLANGE)  
 NFB-FF DN50

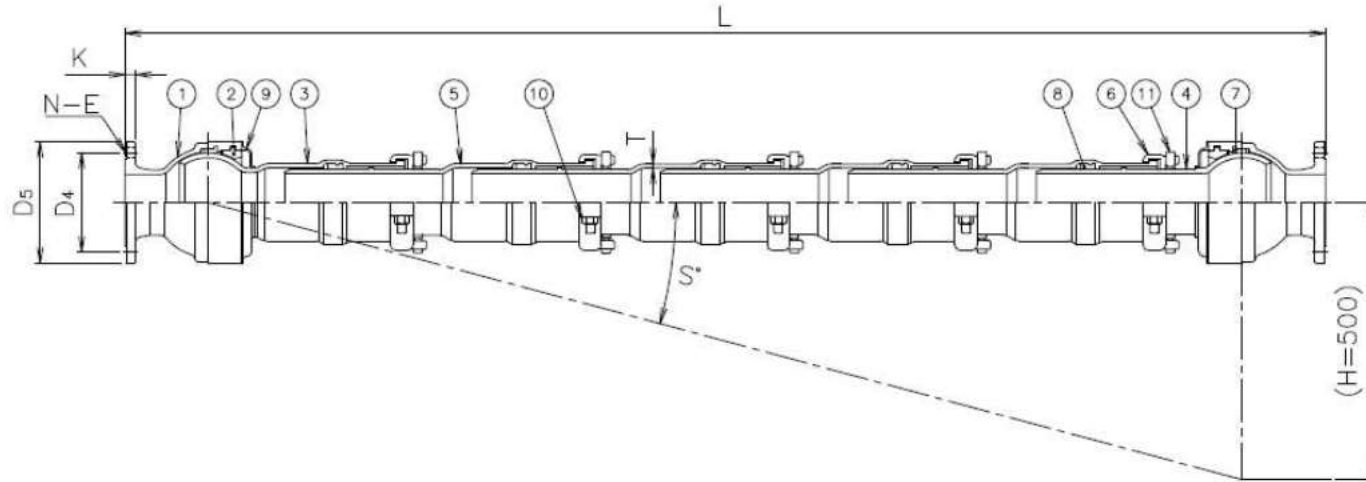
APPROVED BY	CHECKED BY	DRAWN BY	SCALE	FREE
M.O	T.S	N.Y	DATE	2021.11.5

ASSEMBLY NO. 2021-U352-1

SYMBOL DN	D4	D5	K	N-E	T	S'	H=500	
							L	EX.&CON
50	125	165	19	4-19	6	21	1830	+350 -150
TOLERANCE	±1.5	+FREE -2.0	+4.0 0	(C)+1.5 (E) 0	+FREE -2.0	±1%		

PROJECT:HOUSING AUTHORITY

SUIKEN CO., LTD



EX.&CON. MEANS EXPANSION AND CONTRACTION.  
n IS NUMBER OF ITEM NO.11 STOPPER BOLT.

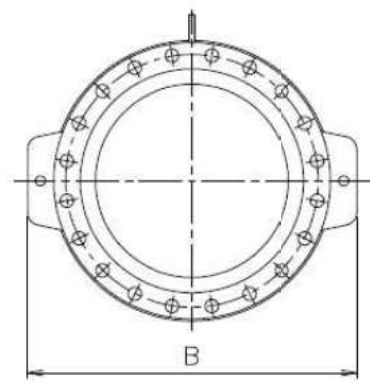
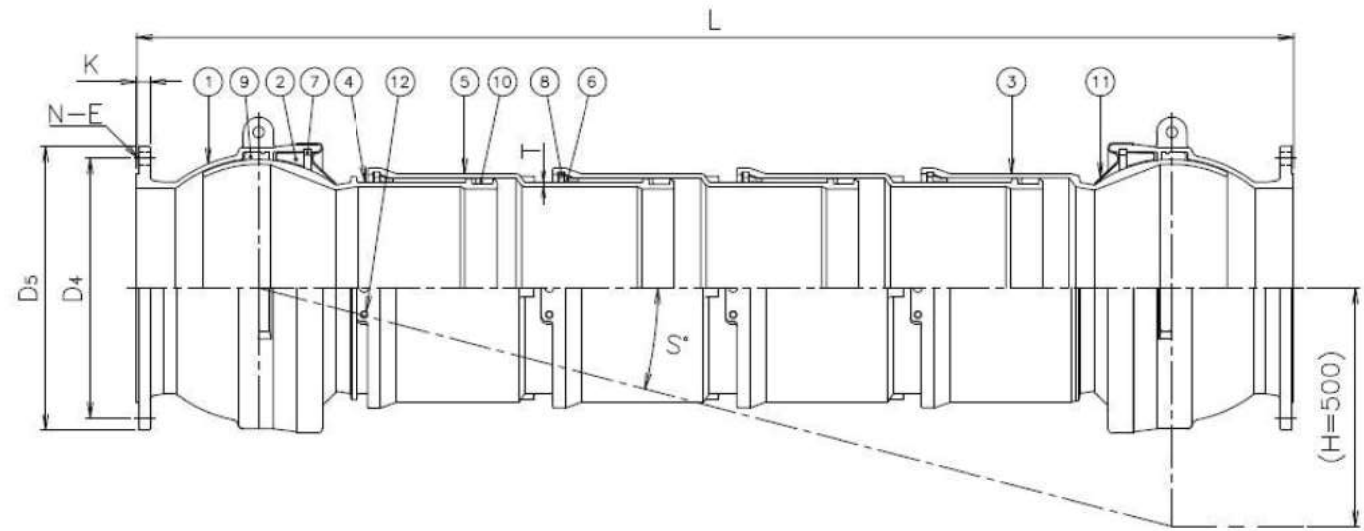
SYMBOL DN	D4	D5	K	N-E	T	S*	H=500		n
							L	EX.&CON.	
80	160	200	19.0	8-19	7.5	15	2140	+270 -230	2
100	180	220		2170			+300 -200		
150	240	285	8-23	2200	4				
200	295	340	20.0	12-23		2260			
250	355	400	22.0	12-28	2350	6			
300	410	455	24.5		2440		4		
80~ 250	±1.5	+FREE -2.0	+4.0 0	(E)+1.5 (E) 0	+FREE -2.0	±1%			
300									

PROJECT:HOUSING AUTHORITY

REMARK:  
\* ITEM 1 N CASING F IS OUTER BALL.  
\* N STANDS FOR NFB.  
\* F STANDS FOR FLANGE.

ITEM NO.	PART NAME	QTY	MATERIAL
11	STOPPER BOLT	n	STEEL SCM435
10	HEX BOLT/NUT	10	STAINLESS STEEL GRADE 316
9	N RUBBER BOOTS	2	RUBBER
8	T-RUBBER BAND OR NC SPECIAL GASKET	5	RUBBER COMPLY WITH BS 6920
7	N SPECIAL GASKET	2	
6	STOPPER	5	
5	SLEEVE PIPE	4	DUCTILE CAST IRON
4	MOVABLE PIPE B	1	BS EN 1563
3	MOVABLE PIPE A	1	GRADE 450/10
2	N CASING	2	(FC450)
1	N CASING F	2	

ITEM NO.	PART NAME	QTY	MATERIAL
DUCTILE CAST IRON SETTLEMENT EXPANSION JOINT SUPER FLEX (BS EN 1092 PN16 FLANGE) NFB-FF DN80~300			
APPROVED BY	CHECKED BY	DRAWN BY	SCALE
M.O	T.S	N.Y	FREE
			DATE
			2021.11.5
ASSEMBLY NO.		2021-U352-2	
SUIKEN CO., LTD			



FRONT VIEW

REMARK:  
 \* ITEM 1 N CASING F IS OUTER BALL.  
 \* N STANDS FOR NFB.  
 \* F STANDS FOR FLANGE.

EX.&CON. MEANS EXPANSION AND CONTRACTION.

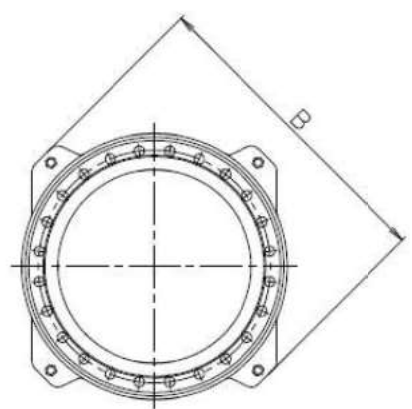
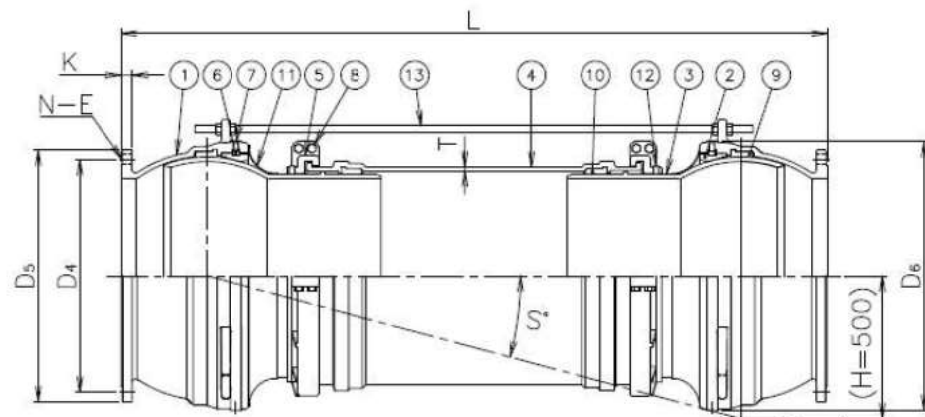
DN	D4	Ds	K	N-E	T	B	S'	H=500	
								L	EX&CON
350	470	520	26.5	16-28	7.5	657	15	2500	+600 -200
400	525	580	28.0	16-31	8.5	710		2570	
450	585	640	30.0	20-31	9.0	763		2610	
500	650	715	31.5	20-34	9.5	815		2670	
600	770	840	36.0	20-37	11.0	932		2790	
350-450 500-600	±1.5	+FREE -2.0	+3.0 0 +6.0 0	(E)±1.5 (E) 0	+FREE -2.0 0 +FREE -2.5	±1%		±1%	

PROJECT:HOUSING AUTHORITY

ITEM NO.	PART NAME	QTY	MATERIAL
12	STOPPER BOLT	16	STEEL SCM435
11	N RUBBER BOOTS	2	RUBBER
10	NC SPECIAL GASKET	4	RUBBER COMPLY WITH BS 6920
9	T-RUBBER BAND OR NB SPECIAL GASKET	2	
8	LOCK RING C	4	STEEL SS400
7	LOCK RING B	2	
6	SPACER RING	4	
5	N SLEEVE PIPE	4	DUCTILE CAST IRON BS EN 1563 GRADE 450/10 (FC0450)
4	N MOVABLE PIPE B	1	
3	N MOVABLE PIPE A	1	
2	N CASING	2	
1	N CASING F	2	

DUCTILE CAST IRON SETTLEMENT  
 EXPANSION JOINT  
 SUPER FLEX  
 (BS EN 1092 PN16 FLANGE)  
 NFB-FF DN350~600

APPROVED BY	CHECKED BY	DRAWN BY	SCALE	FREE
M.O	T.S	N.Y	DATE	2021.11.5
ASSEMBLY NO.			2021-U352-3	
<b>SUIKEN CO., LTD.</b>				



FRONT VIEW

EX.&CON. MEANS EXPANSION AND CONTRACTION.

SYMBOL DN	D4	D5	D6	K	N-E	T	B	S'	L		EX.&CON.
									H=500		
700	840	910	970	39.5	24-37	12	1132	15	2550	+150 -50	
TOLERANCE	±1.5	+FIVE -2.0	+FIVE -2.0	+7.0 0	(E)+1.5 (E) 0	+FIVE -2.5			±1%		

PROJECT:HOUSING AUTHORITY

REMARK:  
\* ITEM 1 CASING F IS OUTER BALL.  
\* F STANDS FOR FLANGE.

ITEM NO.	PART NAME	QTY	MATERIAL
13	TIE ROD	4	STEEL SS400
12	STOPPER BOLT	36	STEEL SCM435
11	RUBBER BOOTS	2	RUBBER
10	T-RUBBER BAND	2	RUBBER COMPLY WITH BS 6920
9	T-RUBBER BAND	2	RUBBER COMPLY WITH BS 6920
8	HEX BOLT/NUT	12	STAINLESS STEEL GRADE 316
7	STOPPER BOLT	16	STEEL SCM435
6	LOCK RING	2	STAINLESS STEEL GRADE 304
5	STOPPER	2	DUCTILE CAST IRON
4	SLEEVE PIPE	1	BS EN 1563 GRADE 450/10
3	MOVABLE PIPE	2	(FCD450)
2	CASING	2	
1	CASING F	2	

DUCTILE CAST IRON SETTLEMENT EXPANSION JOINT SUPER FLEX (BS EN 1092 PN16 FLANGE) FBW-FF DN700				
APPROVED BY	CHECKED BY	DRAWN BY	SCALE	FREE
M.O	T.S	N.Y	DATE	2021.11.5
ASSEMBLY NO.			2021-U352-4	
SUIKEN CO., LTD				