

10	HEX BOLT/NUT	※	BS970 GRADE 304/316
9	RUBBER BOOTS	2	SBR
8	NC SPECIAL GASKET	※	
7	O-RING	2	NBR
6	STOPPER	※	DUCTILE CAST IRON BS EN 1563 GRADE 450/10 (FCD450)
5	SLEEVE PIPE	※	
4	MOVABLE PIPE B	1	
3	MOVABLE PIPE A	1	
2	CASING	2	
1	CASING F	2	
ITEM NO.	PART NAME	QTY	MATERIAL

ABOVE DRAWING SHOWS DN50×200.

※THERE IS NO SLEEVE PIPE INSTALLED ON H=100MM TYPE.

ONE SET WILL BE ADDED TO THE JOINT BY ADDITIONAL 100MM SUBSIDENCE CAPABILITY.

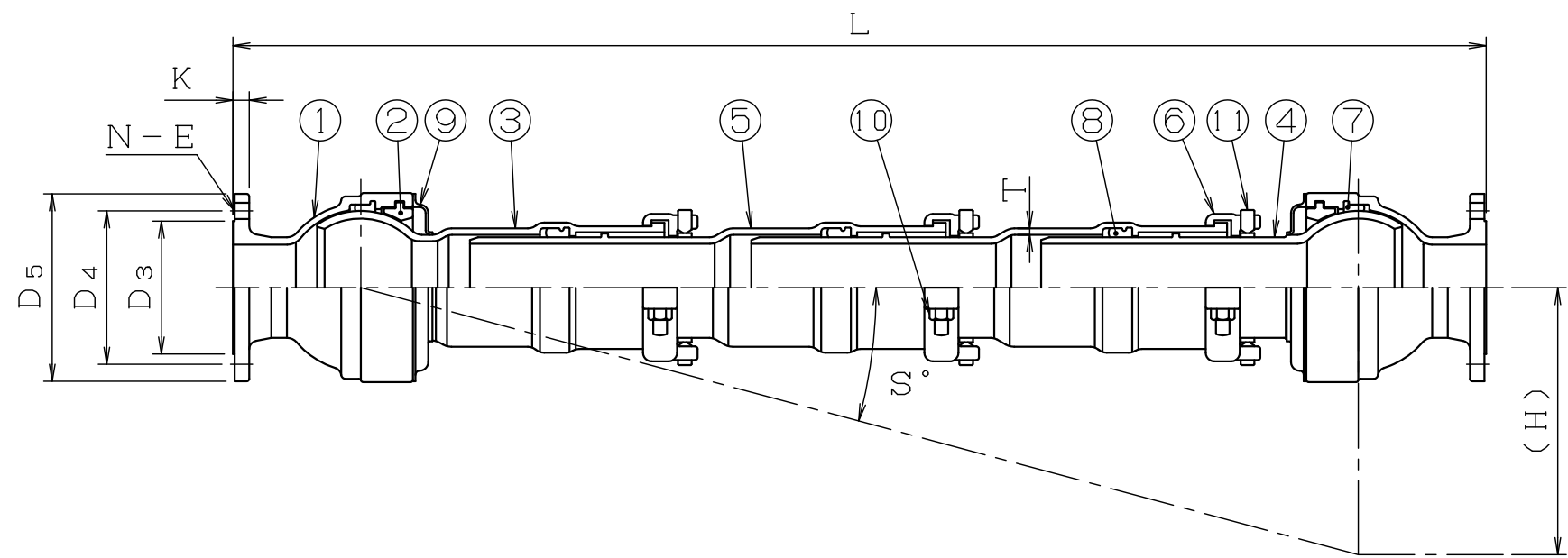
(ONE SET INCLUDES ONE SLEEVE PIPE, ONE STOPPER, ONE NC SPECIAL GASKET AND FOUR SETS OF HEX BOLTS/NUTS.)

DUCTILE CAST IRON FLEXIBLE  
EXPANSION JOINT  
SUPER FLEX  
(BS PN16 FLANGE)  
NFB-FF DN50

APPROVED BY	CHECKED BY	DRAWN BY	SCALE	FREE
M.O	T.S	Y.N	DATE	2014.9.8
ASSEMBLY NO.		GS-890501-1		

※EX.&CON. MEANS  
EXPANSION AND  
CONTRACTION.

SYMBOL DN	D4	D5	K	N-E	T	S°	H=100		H=200		H=300		H=400		H=500		H=600	
							L	EX.&CON.	L	EX.&CON.	L	EX.&CON.	L	EX.&CON.	L	EX.&CON.	L	EX.&CON.
50	125	165	19	4-19	6	21	610	+70 -30	915	+140 -60	1220	+210 -90	1525	+280 -120	1830	+350 -150	2135	+420 -180
TOLERANCE	±1.5	+FREE -2.0	+4.0 0	(E)+1.5 (E) 0	+FREE -2.0		±1%		±1%		±1%		±1%		±1%		±1%	



ABOVE DRAWING SHOWS DN100×300. (THE STRUCTURE IS DIFFERENT FOR H=200MM TYPE OF DN 80 THROUGH DN 200.)  
 ※THERE IS NO SLEEVE PIPE INSTALLED ON H=100MM TYPE.  
 ONE SET WILL BE ADDED TO THE JOINT BY ADDITIONAL 100MM SUBSIDENCE CAPABILITY.  
 (ONE SET INCLUDES ONE SLEEVE PIPE, ONE STOPPER, ONE T-RUBBER BAND, TWO SETS OF HEX BOLTS/NUTS AND ONE SET OF STOPPER BOLT.)

1 1	STOPPER BOLT	※	SCM435
1 0	HEX BOLT/NUT	※	BS970 GRADE 304/316
9	N RUBBER BOOTS	2	SBR
8	T-RUBBER BAND	※	
7	N SPECIAL GASKET	2	
6	STOPPER	※	
5	SLEEVE PIPE	※	DUCTILE CAST IRON
4	MOVABLE PIPE B	1	BS EN 1563 GRADE 450/10 (FCD450)
3	MOVABLE PIPE A	1	
2	N CASING	2	
1	N CASING F	2	
ITEM NO.	PART NAME	QTY	MATERIAL

SYMBOL DN	D3	D4	D5	K	N-E	T	S°	H=100		H=200		H=300		H=400		H=500		H=600		
								L	EX.&CON.	L	EX.&CON.	L	EX.&CON.	L	EX.&CON.	L	EX.&CON.	L	EX.&CON.	
80	132	160	200	19.0	8-19	7.5	15	740	+70 -30	1410	+200 -100	1760	+250 -150	2140	+270 -230	2510	±300			
100	156	180	220		8-23			800						1470	1820	2170	2540	+330 -270		
150	211	240	285		12-23			830						1500	1850	2200	2550			
200	266	295	340	20.0	12-28	890	1560	1910	2260	+300 -200	2610	+350 -250								
250	319	355	400	22.0	12-28	940	1630	1990	2350	2710										
300	370	410	455	24.5		1030	1360	+150 -50	1720	2080	2440	2800								
80~250	+3.0 -2.0	±1.5	+FREE -2.0	+4.0 0 +5.0 0	(E)+1.5 (E) 0	+FREE -2.0	±1%	±1%	±1%	±1%	±1%	±1%	±1%							

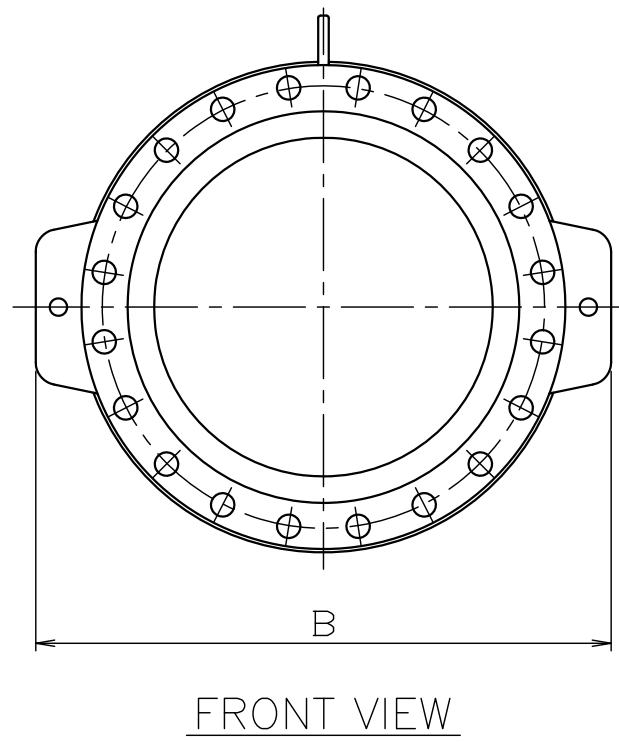
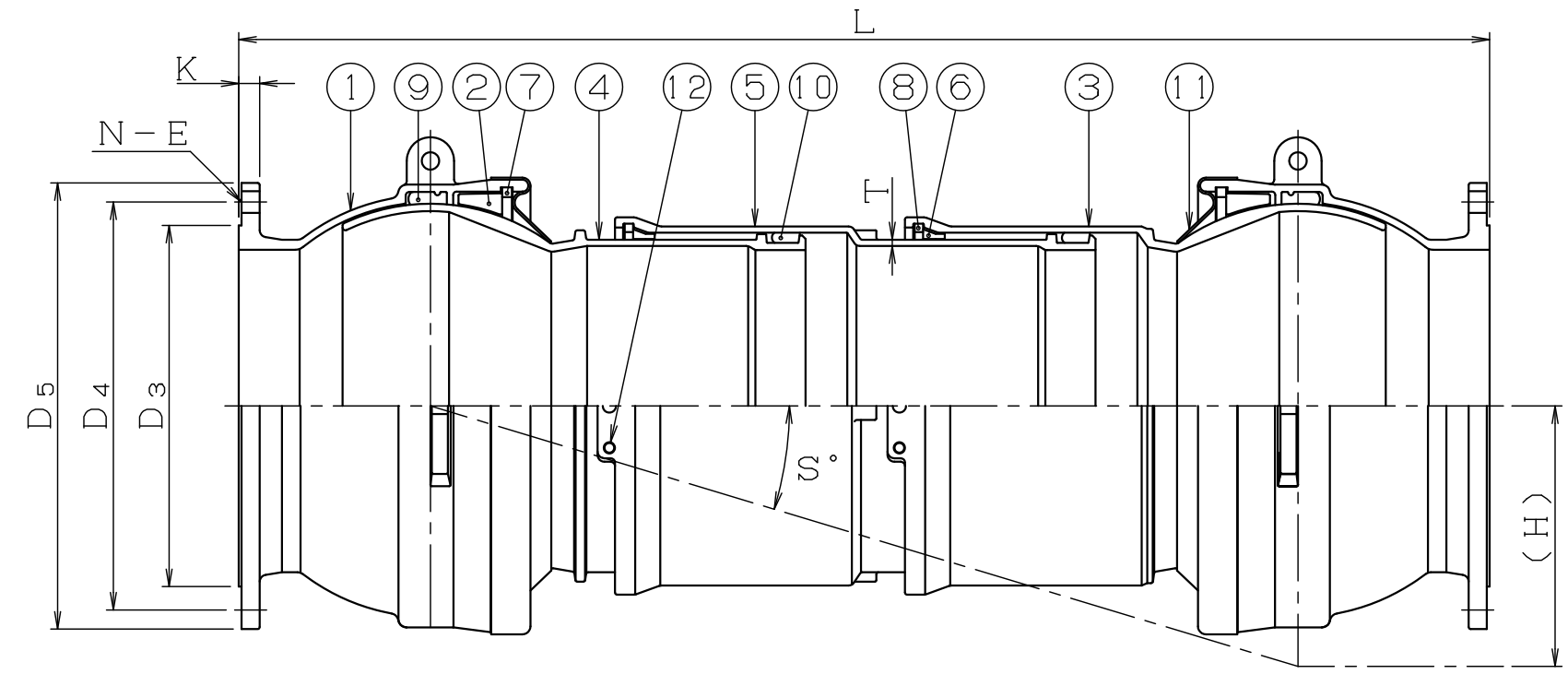
※EX.&CON. MEANS EXPANSION AND CONTRACTION.

DUCTILE CAST IRON FLEXIBLE  
EXPANSION JOINT  
SUPER FLEX  
(BS PN16 FLANGE)  
NFB-FF DN80~300

APPROVED BY	CHECKED BY	DRAWN BY	SCALE	FREE
M.O	T.S	Y.N	DATE	2014.1.9

ASSEMBLY NO. GS-890801-1

**SUIKEN CO., LTD**



ABOVE DRAWING SHOWS DN450×300.  
 ※THERE IS NO SLEEVE PIPE INSTALLED ON H=200MM TYPE.  
 ONE SET WILL BE ADDED TO THE JOINT BY ADDITIONAL 100MM SUBSIDENCE CAPABILITY.  
 (ONE SET INCLUDES ONE N SLEEVE PIPE, ONE SPACER RING, ONE LOCK RING,  
 ONE NC SPECIAL GASKET AND FOUR STOPPER BOLTS.)  
 ITEM NO.9 IS NB SPECIAL GASKET FOR DN450 AND DN600

12	STOPPER BOLT	※	SCM435
11	N RUBBER BOOTS	2	SBR
10	NC SPECIAL GASKET	※	
9	T-RUBBER BAND OR NB SPECIAL GASKET	2	SS400
8	LOCK RING C	※	
7	LOCK RING B	2	
6	SPACER RING	※	
5	N SLEEVE PIPE	※	DUCTILE CAST IRON BS EN 1563 GRADE 450/10 (FCD450)
4	N MOVABLE PIPE B	1	
3	N MOVABLE PIPE A	1	
2	N CASING	2	
1	N CASING F	2	
ITEM NO.	PART NAME	QTY	MATERIAL

SYMBOL DN	D <sub>3</sub>	D <sub>4</sub>	D <sub>5</sub>	K	N-E	T	B	S°	H=200		H=300		H=400		H=500		H=600	
									L	EX.&CON.	L	EX.&CON.	L	EX.&CON.	L	EX.&CON.	L	EX.&CON.
350	429	470	520	26.5	16-28	7.5	657	15	1270		1680		2090		2500		2910	
400	480	525	580	28.0	16-31	8.5	710		1340		1750		2160		2570		2980	
450	548	585	640	30.0	20-31	9.0	763		1380	+150 -50	1790	+300 -100	2200	+450 -150	2610	+600 -200	3020	+750 -250
500	609	650	715	31.5	20-34	9.5	815		1420		1840		2260		2670		3080	
600	720	770	840	36.0	20-37	11.0	932		1520		1950		2380		2790		3200	
350~450	+3.0 -2.0	±1.5	+FREE -2.0	+5.0 0	(E)+1.5 (E) 0				±1%		±1%		±1%		±1%		±1%	

※EX.&CON. MEANS EXPANSION AND CONTRACTION.

DUCTILE CAST IRON FLEXIBLE  
 EXPANSION JOINT  
 SUPER FLEX  
 (BS PN16 FLANGE)  
 NFB-FF DN350~600

APPROVED BY	CHECKED BY	DRAWN BY	SCALE	FREE
M.O	T.S	Y.N	DATE	2014.1.9

ASSEMBLY NO. GS-891901-1

**⊗ SUIKEN CO., LTD**