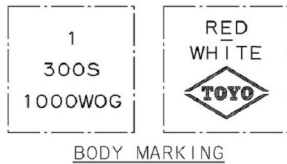
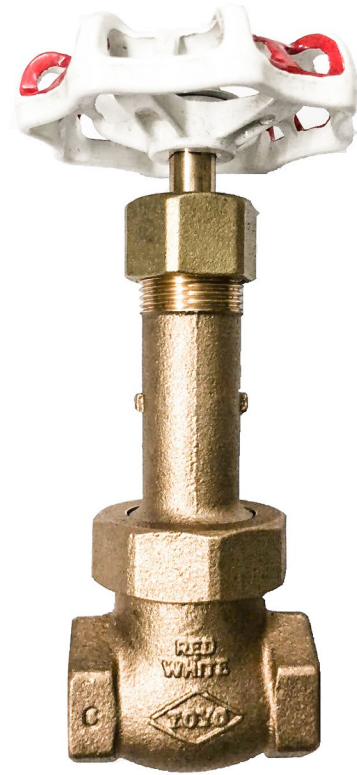
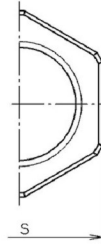
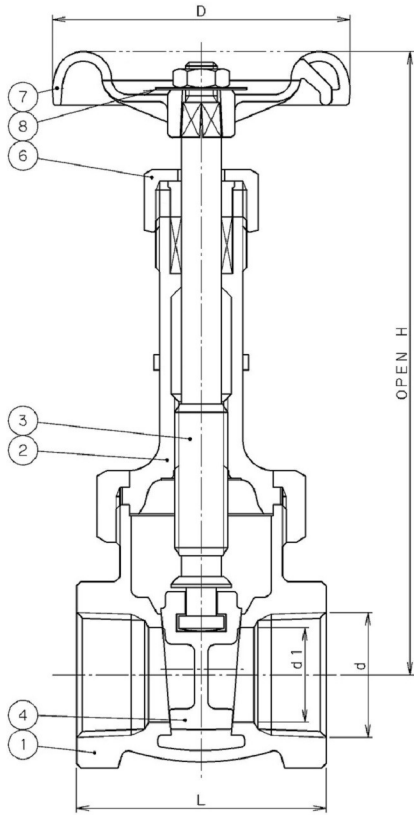




# CLASS 300 BRONZE GATE VALVE

Rising stem, Union bonnet, solid wedge disc, screwed ends.



BODY MARKING

### Materials

No.	Name of Parts	Materials	ASTM	BS Equivalent
1	Body	Cast Bronze	B61-C92200	BSEN 1982-CC499K
2	Bonnet	Cast Bronze	B61-C92200	BSEN 1982-CC499K
3	Stem	Cast Bronze	B62-C83600	BSEN 1982-CC491K
4	Disc	Cast Bronze	B61-C92200	BSEN 1982-CC499K
6	Packing nut	Forged brass		
7	Handwheel	Aluminium		
8	Name Plate	Aluminium Plate		

### Working Pressure

Working Pressure Non-Shock		Test Pressure	
Saturated Steam	Cold Water Oil, Gas	Shell (Water)	Seat (Water)
20.6 Bar	63 Bar	94.5 Bar	69.3 Bar

### Dimensions

unit : mm

SIZE		d1	H	L	S	MASS (kg)
A	d					
15	1/2	15	150	51	29	0.61
20	3/4	20	173	56	35	0.83
25	1	25	194	66	44	1.15
32	1¼	32	228	74	54	1.90
40	1½	40	273	84	60	2.75
50	2	50	313	98	74	4.35

Note:

- End threads conform to BS EN 10226 (formerly BS21) taper, NPT thread also available.
- These valves conform to MSS SP-80 and meets requirement of BS EN 12288.