



624-01
 — Model — **124G-01**
124A-01

FLOAT VALVE



- Accurate & Repeatable Level Control
- On-Off (Submersible Type)
- Fully Adjustable High & Low Level Settings
- Simple Design, Proven Reliable
- Easy Installation and Maintenance

The Cla-Val NGE, GE & AE Series Float Valve is a non-modulating valve which accurately controls the liquid level in tanks. This valve is designed to open fully when the liquid level reaches a preset low point and close drip tight when the level reaches a preset high point.

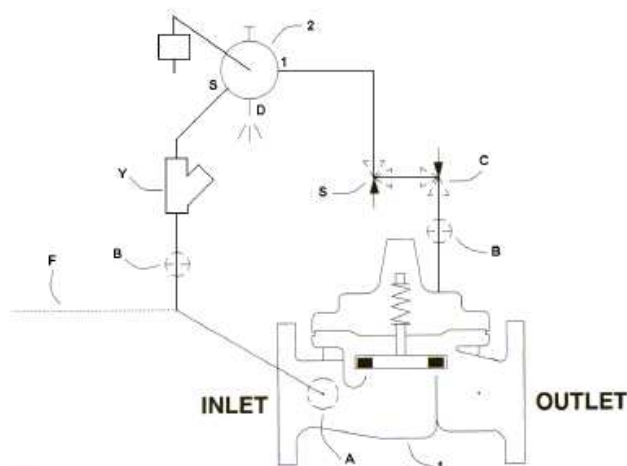
This is a hydraulically operated, diaphragm valve with the pilot control and float mechanism mounted on the cover of the main valve. The float positions and pilot control to close the valve when the float contacts the upper stop. The high and low liquid levels are adjusted by positioning the stop collars on the float rod. The difference between high and low levels can be adjusted to as little as one inch, or to as much as 18 inches by adding optional float rod extensions. Level settings can be as much as 11 1/2 feet below the valve. The float mechanism may be located remotely from the main valve. See the technical data sheet on Model CF1-C1 Float Control for additional information.

Schematic Diagram

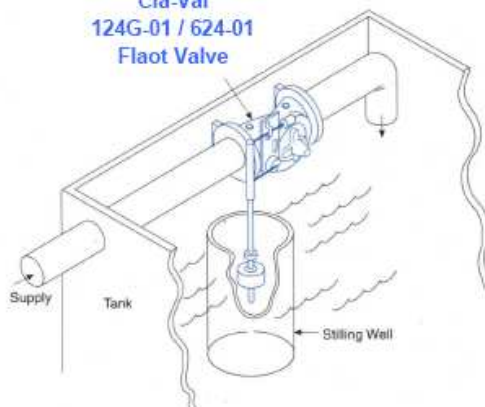
Item	Description
1	Hytrol (NGE, GE or AE Main Valve)
2	CF1-C1 Float Control
Y	"Y" Strainer

Optional Features

Item	Description
A	X46A Flow Cleaner Strainer
C	CV Flow Control (Closing)
D	Check Valves With Cock
F	Independent Operating Pressure
S	CV Flow Control (Opening)
B	Spherical Valves



Cla-Val
 124G-01 / 624-01
 Float Valve



Typical Applications

The Model 124-01/624-01 Float Valve is commonly mounted above the high water level in a tank. Globe pattern valves are supplied standard with the float control mounted on the cover as illustrated, with a horizontal discharge. Angle valves are configured to discharge downwards. Note: We recommend protecting tubing and valve from freezing temperatures.

Installation

A stilling well (8" minimum diameter) must be provided around the float if the liquid surface is subject to turbulence, ripples or wind. When the valve is mounted on top of the tank roof a 2" clearance hole should be provided for side movement of the float rod where the rod goes through the top of the tank.

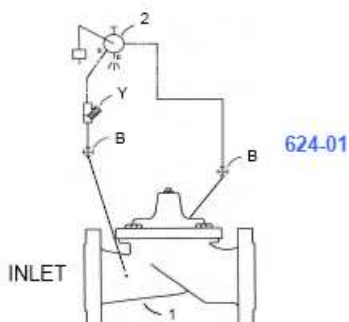
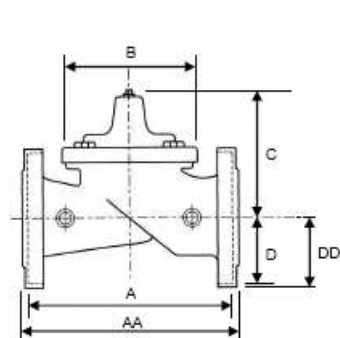
An independent source of air or water may be used to operate the valve. The pressure from this independent source must at all times be equal to or greater than pressure at the valve inlet.

If minimum flowing line pressure is less than 10 psi, consult Cla-Val for full details.

If the float control is remotely mounted from the main valve, control may be installed at any elevation above the valve, provided the flowing line pressure in psi is equal to or greater than the vertical distance in feet between the valve and the float control. See the technical data sheet on Model CF1-C1 for additional information.

Float Valve

NGE Series Model: 624-01 (Uses Basic Valve Series "NGE")



NGE Series Hytrol Valve

Dimensions

Size inch (mm)	2" (50)	3" (80)	4" (100)	5" (125)	6" (150)	8" (200)	10" (250)	12" (300)	14" (350)	16" (400)	20" (500)	24" (600)	28" (700)	32" (800)
A (150 ANSI)	216	260	353	451	451	543	660	762	864	889	1219	1219	1521	1521
A A (300 ANSI)	254	279	368	473	473	568	695	800	902	930	1260	1264	1595	1595
B	143	168	232	292	292	400	508	600	696	711	900	900	1380	1380
C	140	178	219	295	295	381	454	533	632	654	787	787	1230	1230
D (150 ANSI)	64	95	114	140	140	171	203	241	267	299	370	432	633	633
DD (300 ANSI)	83	105	127	159	159	191	222	260	292	324	408	483	750	750

Pressure Ratings (Recommended Maximum Pressure - psi)

Valve Body & Cover		Pressure Class			
		Flanged *			Screwed
Grade	Material	ANSI Standard	150 lb	300 lb	End Details
ASTM A126	Cast Iron	B16.42	250	400	400
ASTM A216-WCB	Cast Steel	B16.5	285	400	400
ASTM B62	Bronze	B16.24	225	400	400
Type 304	Stainless Steel	B16.5	285	400	400
ASTM A-536	Ductile Iron	B16.42	250	400	400

Note: * ANSI flanged valves are available drilled to British Standard.

Materials

Body & Cover	Cast Iron*	Cast Steel	Bronze	Stainless Steel	Ductile Iron*
Disc Retainer & Diaphragm Washer	ASTM A126 BS1452 Gr.220	ASTM A216-WCB BS1504-161	ASTM B62 BS1400 LG2	Type 304 / 316 BS1449 / 2	ASTM A-536 BS2789 Gr.420
Trim: Disc Guide, Seat & Cover Bearing	Bronze is standard. 316 Stainless Steel is optional.			316 Stainless Steel is standard	
Disc	Buna-N Rubber				
Diaphragm	Nylon Reinforced Buna-N Rubber				
Stem, Nut & Spring	Stainless Steel				
Note: With Internal & External Epoxy coating (Colour: Red, Brown or Blue)					



CLA-VAL

PO Box 1325 Newport Beach CA 92659-0325
Phone: 949-722-4800 * Fax: 949-548-5441

CLA-VAL CANADA, LTD.
4687 Christie Drive
Beamsville, Ontario
Canada LOR 1B4
Phone: 905-563-4963
Fax: 905-563-4040

CLA-VAL SA
Chemin des Mesanges 1
CH-1032 Romanel/
Lausanne, Switzerland
Phone: 41-21-643-15-55
Fax: 41-21-643-15-50

©COPYRIGHT CLA-VAL 2000 Printed in USA
Specifications subject to change without notice.

www.cla-val.com

Represented By: